

CABOT

As gracious as the homes of 18th century New England, the Cabot is a true showplace for the family who enjoys luxury living and stylish entertaining. Among its many dramatic features, the Cabot has a fireplace, winding staircase, large living room with wooden beams, and a master bedroom with private balcony and Smokler's exclusive "Vista-Vue" ceiling. Truly, a magnificent home.



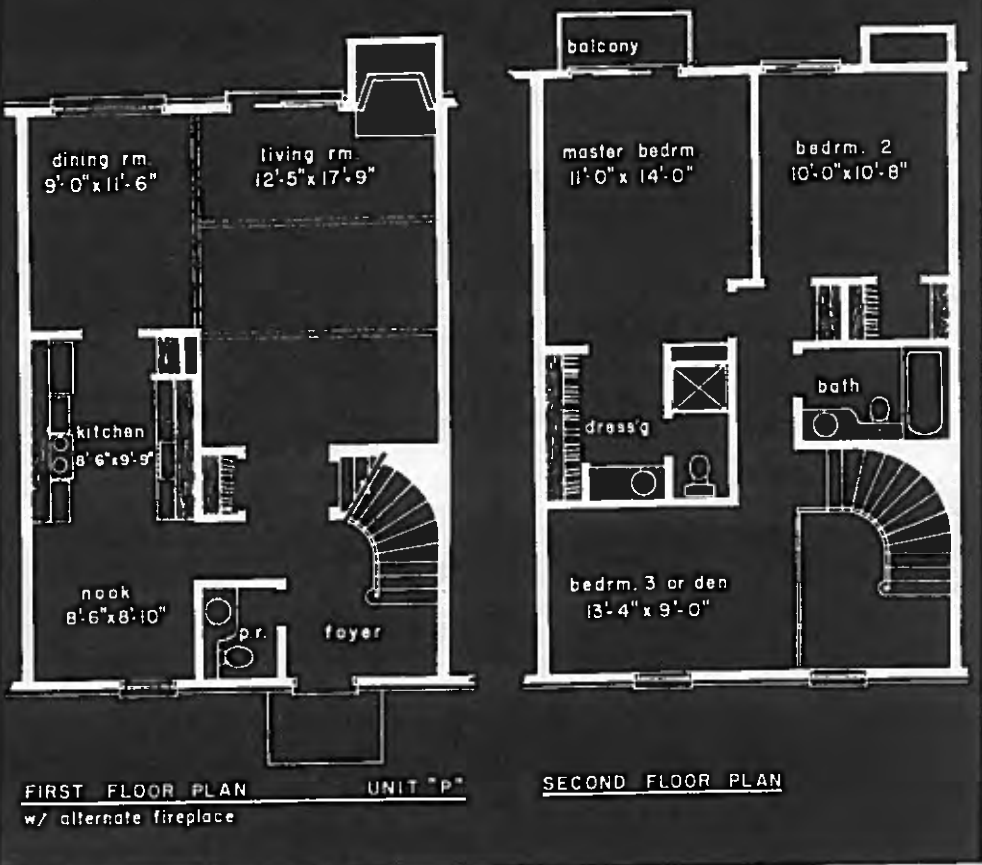
Features of the Cabot

- Your kitchen, ideally-situated between dining room and breakfast nook, saves you time and effort as you cook with your deluxe automatic oven and range. At your fingertips are a 14 cu. ft. double-door refrigerator/freezer, optional GE dishwasher, stainless steel sink with single-handed faucet and disposal, and Formica-topped counters with appliance plugs. You'll also have a large pantry and adjustable custom cabinets with plenty of cupboard space.
- Your foyer, with a powder room on one side and a winding staircase on the other, leads past a large coat closet directly down into your long, wide living room.
- Your living room itself, with its heavy wooden beams and fireplace, features a sliding glass doorwall to the patio area. The whole effect is one of vast space and extreme comfort, offering you a place to entertain with pride as well as convenience.
- You'll have a terrace dining room facing the rear lawn through Smokler's exclusive "Gardenview" windows. Whether your tastes run to candlelit supper parties or cards-and-sandwiches, there's no better place to serve your guests.
- Upstairs and down, the Cabot's bathrooms reflect true luxury. A private bathroom with stall shower and suede Formica vanity is in the private dressing room off the master bedroom, and a powder room serves the ground floor.
- Cabot bedrooms are something special. The master bedroom features Smokler's exclusive "Vista-Vue" ceilings, private balcony and large dressing room with walk-in closet. Next to it is a second bedroom with double closet, while a third bedroom in the front of the home can (if you wish) be converted into a den or upstairs family room.
- With most homes, you have to figure on paying for "extras," like carpeting and central air-conditioning. But with the Cabot, they're all included in the purchase price... as are gas forced-air furnace and sound-conditioned walls. So you start saving money even before you move in.
- What else? Private front and rear entrances and a full basement pre-plugged for your washer, with copper plumbing and a big 40-gallon hot water tank. Lots of storage space, too.

Prices and specifications subject to change without notice. Patio landscaping, decorator wall coverings and floor coverings, decorator paint colors, mirrors, plant-ons, furnishings, draperies, and other personal property are used for display purposes and are not included.

Quality Features — other side

3 BEDROOMS, 2½ BATHS, FULLY AIR-CONDITIONED & CARPETED

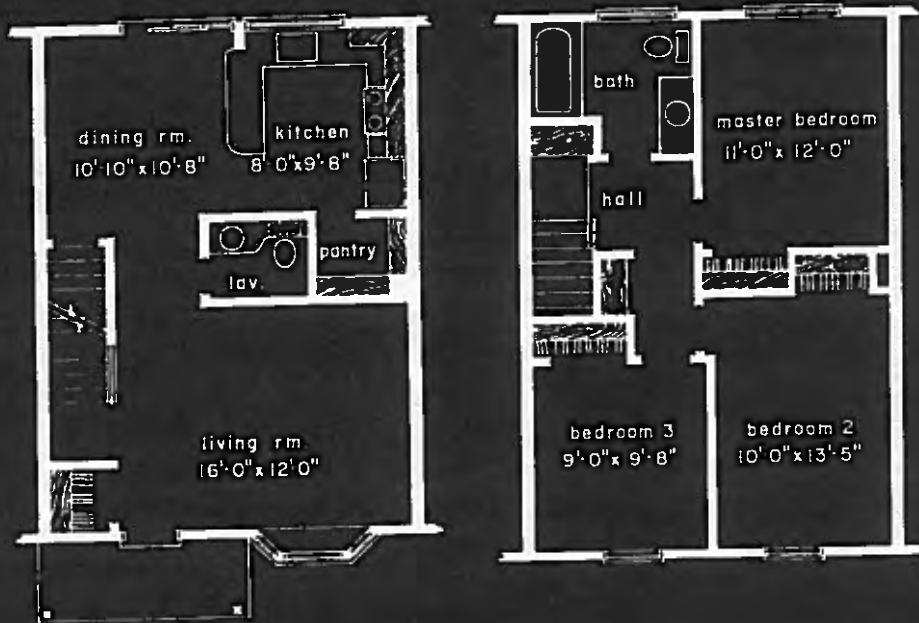




CHATEAU

We built the Chateau for families who want to combine privacy with luxury living at a reasonable price. Here's a kitchen that looks like the model for a homemaker's magazine, a living room that's perfect for company. One look-through and you'll agree — the Chateau is a wonderful place to raise your family.

3 BEDROOMS, 1½ BATHS, FULLY AIR-CONDITIONED & CARPETED



FIRST FLOOR PLAN UNIT "E"

SECOND FLOOR PLAN

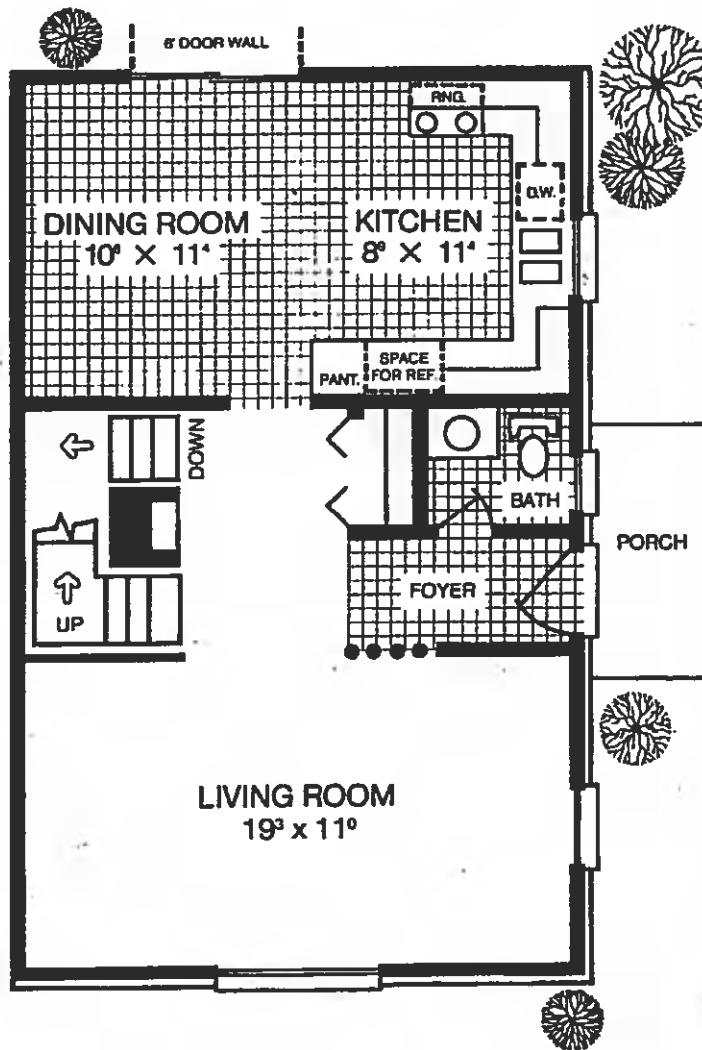
Features of the Chateau

- What a sensational kitchen — 14 cu. ft. double-door refrigerator-freezer, optional GE dishwasher, deluxe automatic oven and range, and stainless steel sink with single-handed faucet and disposal. Also, mar-resistant Formica-topped counters (including snack bar) with convenient counter plugs for appliances, and adjustable custom-cabinets that provide an amazing amount of cupboard space. There's even an old-fashioned walk-in pantry for stocking up and storing a whole month's worth of groceries!
- Entertaining comes naturally in the Chateau's living room, with its sunny bay window seat that adds extra charm. And we've placed electrical outlets practically everywhere, so you can arrange your furniture any way you like.
- Your large dining room looks right through a sliding glass door-wall onto the patio area, so with equal ease you can serve a formal dinner in luxury or barbecue in your private backyard and serve in the dining room.
- Luxury keynotes the main bath available with optional gold accessories, decorator-designed oval sink, ceramic tile, and separate soap dishes for bath and shower. And you'll enjoy the luxury of the downstairs powder room that serves your guests.
- Bedrooms in the Chateau are large and comfortable, with big closet space in each. We built them that way because we know you want them that way — and don't you love those dramatic new floor-to-ceiling closet doors.
- Upstairs, you'll find both a special utility closet to save you running up and down — plus wide, deep linen cupboard with a special folding counter.
- Forget about "extras." Carpeting, sound-conditioned walls, central air-conditioning, and gas forced-air heat are all included in the purchase price of your Chateau. And the full basement with its copper plumbing and 40-gallon hot water tank is already pre-plugged for your washer.

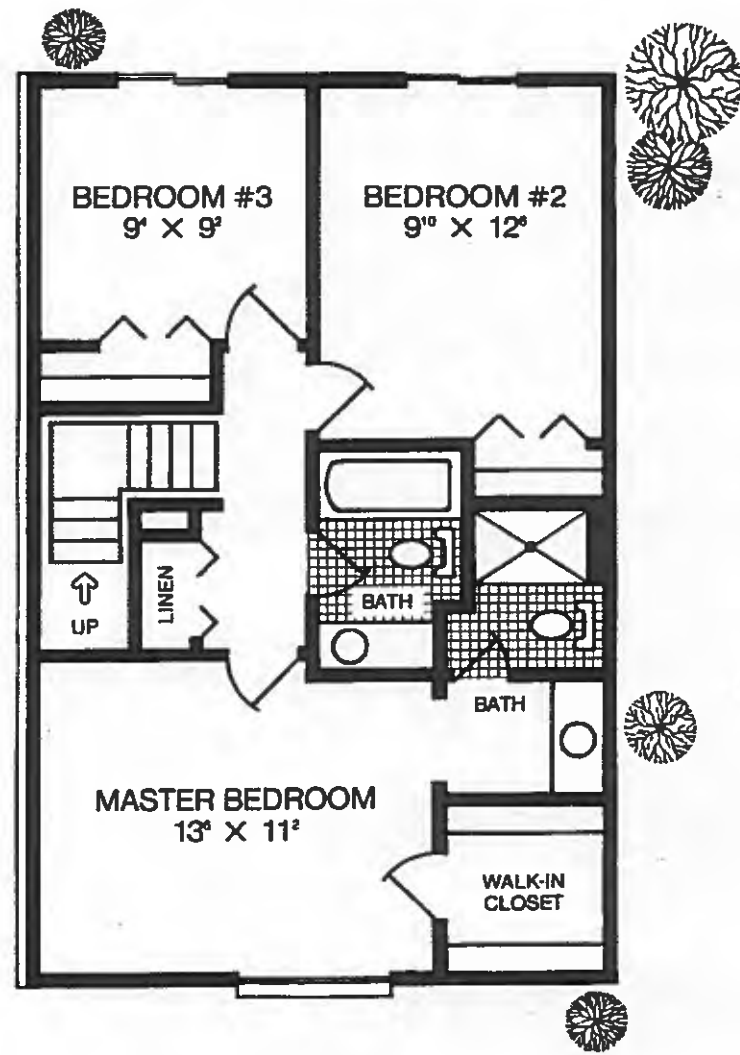
Prices and specifications subject to change without notice. Patio landscaping, decorator wall coverings and floor coverings, decorator paint colors, mirrors, plant-ons, furnishings, draperies, and other personal property are used for display purposes and are not included.

The DREXEL

1320 square feet • 3 bedroom 2½ bath



FIRST FLOOR PLAN

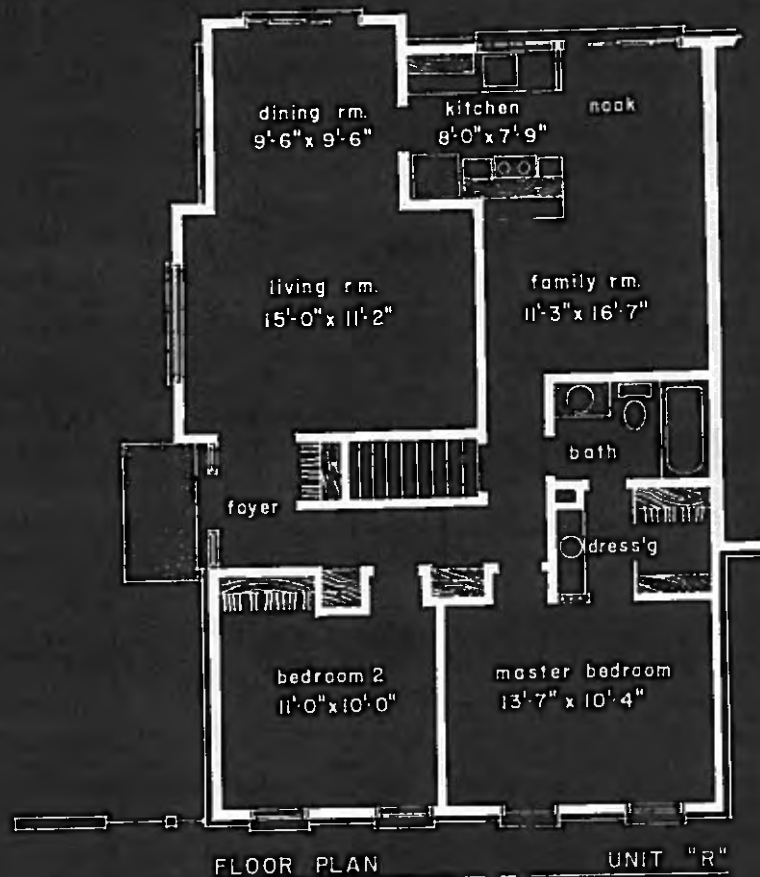


SECOND FLOOR PLAN

LODGE

Ideal for the family that wants a den or an extra bedroom for overnight guests, this stylish Townhouse combines luxury with convenience by placing 2 bedrooms, living room, dining room, and kitchen all on one floor.

2 BEDROOMS, 1 BATH, FULLY AIR-CONDITIONED & CARPETED



Features of the Lodge

- Lovely traditional kitchen with Smokler's exclusive "Garden view" windows overlooks your private rear yard and saves you steps as you cook with deluxe automatic oven and range surrounded by 14 cu. ft. double-door refrigerator-freezer stainless steel sink with single-handed faucet and disposal optional GE dishwasher, Formica-topped counters with appliance plugs, adjustable custom cabinets, and loads of cupboard space. And right next to the kitchen is a handy snack counter, serving bar.
- For space and luxury, your living room features Smokler's exclusive "Vista-View" ceiling.
- Large dining area allows you to entertain graciously, yet serves just as well as a cozy place for 2 to have pizza together
- The bathroom is something special . . . available with optional gold accessories, new suede-Formica counter on vanity, ceramic tile floor and tub area, and 2 soap dishes (one for shower, one for bath).
- Master bedroom has its own private dressing room area with vanity and decorator-designed oval bowl, as well as walk-in double closet.
- Step-saving utility closet is placed close to carpeted area while hall features wide, deep linen cupboards with special linen-folding counter.
- Big full basement has 40-gallon hot water heater and loads of storage space.
- Carpeting, central air-conditioning, gas forced-air heat and sound-conditioned walls, are included in the price of the Lodge
- Your privacy and convenience are insured with your individual front and rear entrances.

Prices and specifications subject to change without notice. Patio landscaping decorator wall coverings and floor coverings, decorator paint colors, mirrors, plant-ons, furnishings, draperies, and other personal property are used for display purposes and are not included.

MANOR

1401

The Manor is a dream home come true. It has a fireplace, soaring "Vista-Vue" ceiling, a wide "Gardenview" window and sliding glass doorwall facing the rear lawn, magnificent modern kitchen, a master bedroom with private balcony and separate dressing area and your own private front and rear entrances. You'll love living in the luxury of the Manor.



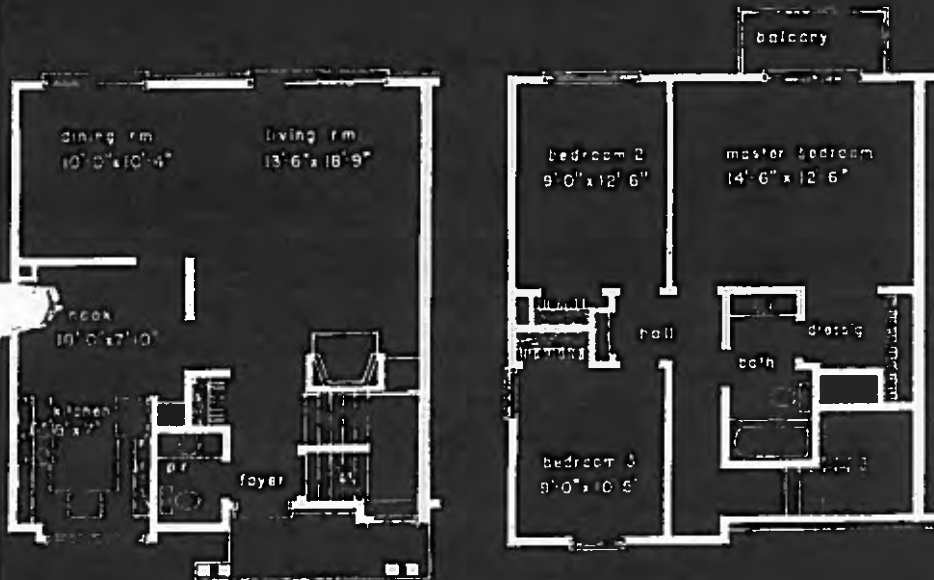
Features of the Manor

- In the Manor's compact, step-saving kitchen and breakfast nook, you'll find every up-to-date convenience — 14 cu. ft. double-door refrigerator/freezer, optional GE dishwasher, deluxe automatic oven and range, stainless steel sink with single-handed faucet and disposal, mar-resistant Formica-topped counters with counters plugs, utility closet, and adjustable custom cabinets that provide loads of cupboard space.
- "Vast" is the only word to describe the impression you'll get of the Manor's living and dining rooms. Facing your private backyard across the entire width of the home, these rooms seem even larger as the outdoors looms through their great expanse of crystal-clear glass.
- All the Manor's bedrooms, with their "Vista-Vue" ceilings and soaring floor-to-ceiling closet doors, are large and airy, but the Owner's Suite is in a class by itself. A private balcony extends practically the width of the bedroom, and a separate dressing area with vanity and wall-length closet, with double-shelves, leads directly to the main bath.
- The upstairs bathroom available with optional gold accessories and the downstairs powder room fully reflect the keen attention to beauty and detail with which the Manor was built. Decorator-designed oval bowls, ceramic tiled floors and tub area, and new suede Formica vanities are among their many proud luxuries.
- We're doing our best to make things easy for you, and one of our ways is to build a special linen cabinet with a linen-folding counter in the upstairs hall. Saves time, saves effort!
- One of the very special features of the Manor is its Parents Retreat, which is just what the name implies. Here's where to hide when the youngsters take over the downstairs for a party. You can also use this room as a library, study, or 3rd bedroom.
- Naturally, the Manor has a full private basement, pre-plugged for your washer, with a big 40-gallon hot water tank. Plenty of storage room, too.
- At the Manor, you not only live in the lap of luxury . . . you save money, too . . . because it's already carpeted and includes sound-conditioned walls, central air-conditioning and gas forced-air heat. Just move in.

Prices and specifications subject to change without notice. Patio landscaping, decorator wall coverings and floor coverings, decorator paint colors, mirrors, plant-ons, furnishings, draperies, and other personal property are used for display purposes and are not included.

CH12

3 BEDROOMS, 1 1/2 BATHS, FULLY AIR-CONDITIONED & CARPETED



FIRST FLOOR PLAN
* alternate fireplace

UNIT "L"

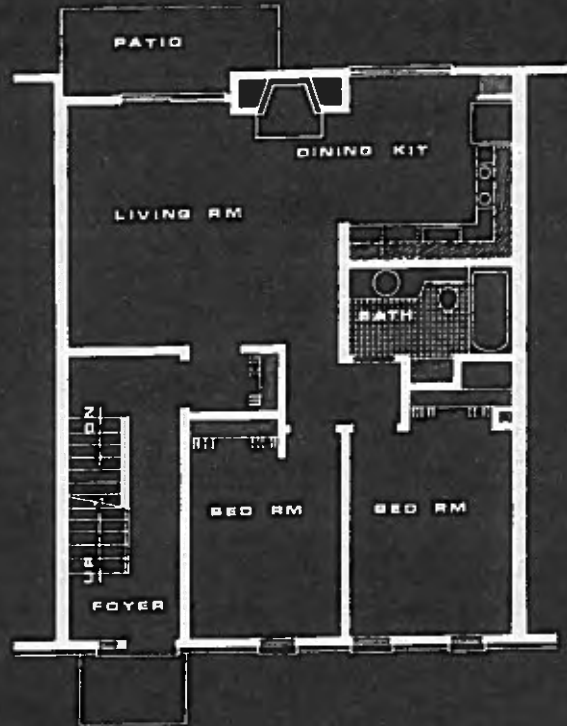
SECOND FLOOR PLAN



TEMPO I

This Tempo home is designed for the family who wants to "love it and leave it." Convenience and luxury surround you during your at-home hours . . . maintenance-free features give you loads of spare-time for the fun things you want to do.

2 BEDROOMS, PATIO, FULLY AIR CONDITIONED & CARPETED



FIRST FLOOR

UNIT G
w/ alternate fireplace

Features of Tempo I

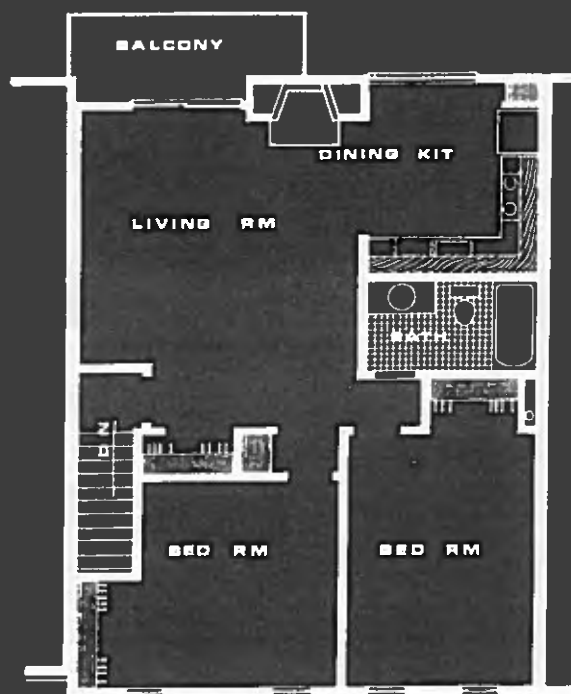
- Double-door refrigerator-freezer, optional GE dishwasher, deluxe automatic oven and range, stainless steel sink with single-handle faucet and disposal. Also, mar-resistant Formica-topped counters with convenient counter-plugs for appliances, and adjustable shelf custom-cabinets that provide an amazing amount of cupboard space.
- The living room has a sliding glass door that opens onto a patio. We've placed electrical outlets practically everywhere, so you can arrange your furniture any way you like.
- Luxury keynotes the bath with decorator-designed oval bowl ceramic tile, and separate soap dishes for bath and shower
- Bedrooms are bright and comfortable, with big closet space in each. You'll love the dramatic new floor-to-ceiling closet doors
- Carpeting, storms and screens, sound-conditioned walls, floor and ceiling, gas forced-air heat are all included in the purchase price of your Tempo home. And the full basement with its copper plumbing and separate 40-gallon hot water tanks is already pre-plugged for your washer.
- Come and go as you please through the always-locked private front entrance.



TEMPO II

We designed this home for those who want the maximum in carefree living at a "mini" price. Sliding glass doors lead out onto a balcony lending additional charm to this spacious and well appointed home.

2 BEDROOMS, BALCONY, FULLY AIR CONDITIONED & CARPETED



SECOND FLOOR

UNIT H

w/ alternate fireplace

Features of Tempo II

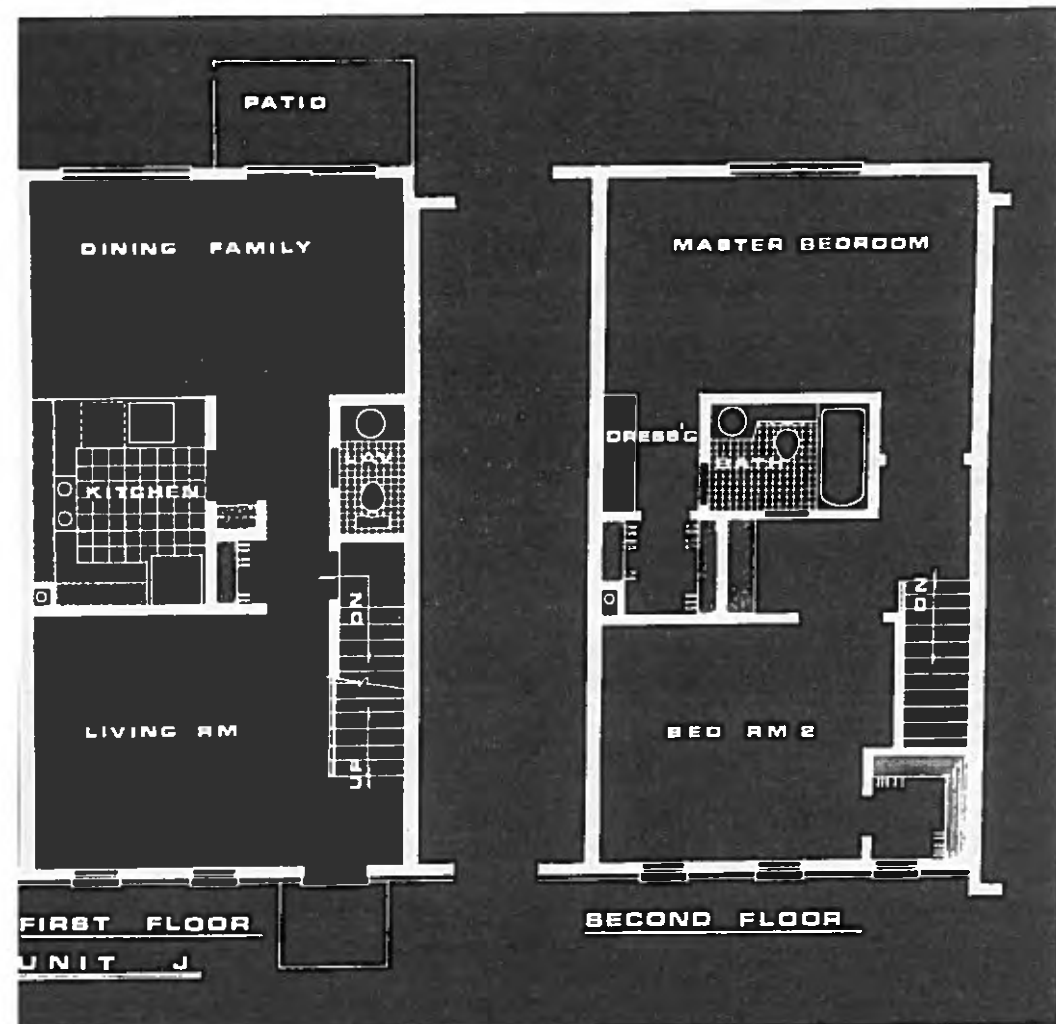
- Double-door refrigerator-freezer, optional GE dishwasher, deluxe automatic oven and range, stainless steel sink with single-handle faucet and disposal. Also, mar-resistant Formica-topped counters with convenient counter-plugs for appliances, and adjustable shelf custom-cabinets that provide an amazing amount of cupboard space.
- The living room has a sliding glass door that opens onto a balcony. We've placed electrical outlets practically everywhere, so you can arrange your furniture any way you like.
- Luxury keynotes the bath with decorator-designed oval bowl, ceramic tile, and separate soap dishes for bath and shower.
- Bedrooms are bright and comfortable, with big closet space in each. You'll love the dramatic new floor-to-ceiling closet doors.
- Carpeting, storms and screens, sound-conditioned walls, floor and ceiling, gas forced-air heat are all included in the purchase price of your Tempo home. And the full basement with its copper plumbing and separate 40-gallon hot water tanks is already pre-plugged for your washer.
- Come and go as you please through the always-locked private front entrance.



TEMPO III

Whether you're newlyweds or long-marrieds, if you like a home geared to fun 'n' friends this is it. A deluxe "U" shaped kitchen adjoins a large dining room and family room with sliding glass doors opening onto a lovely patio. All this good living comes to you at a very reasonable price.

2 BEDROOMS, 1½ BATHS, FULLY AIR-CONDITIONED & CARPETED



Features of Tempo III

- Double-door refrigerator-freezer, optional GE dishwasher, deluxe automatic oven and range, stainless steel sink with single-handed faucet and disposal. Also, mar-resistant Formica-topped counters (including snack bar) with convenient counter plugs for appliances, and adjustable cupboard space. There's even an old-fashioned pantry for stocking up and storing a whole month's worth of groceries!
- The living room is completely separated from the informal areas and is reminiscent of the old-fashioned parlor. We've planned electrical outlets practically everywhere so you can arrange your furniture any way you like.
- Your large dining area looks right through a "Gardenview" window onto the patio area. You can serve a formal dinner in luxury or barbeque in your private backyard and serve in the dining area.
- Luxury keynotes the main bath with decorator-designed oval sink, ceramic tile, and separate soap dishes for bath and shower.
- Both bedrooms are master size with graceful double entry doors and big walk-in closets. We built them that way because we know you want them that way.
- Carpeting, storms and screens, sound-conditioned walls, and gas forced-air heat are all included in the purchase price of your Tempo III. The full basement is already pre-plugged for your washer.
- Come and go as you please through your own private front and rear entrances.

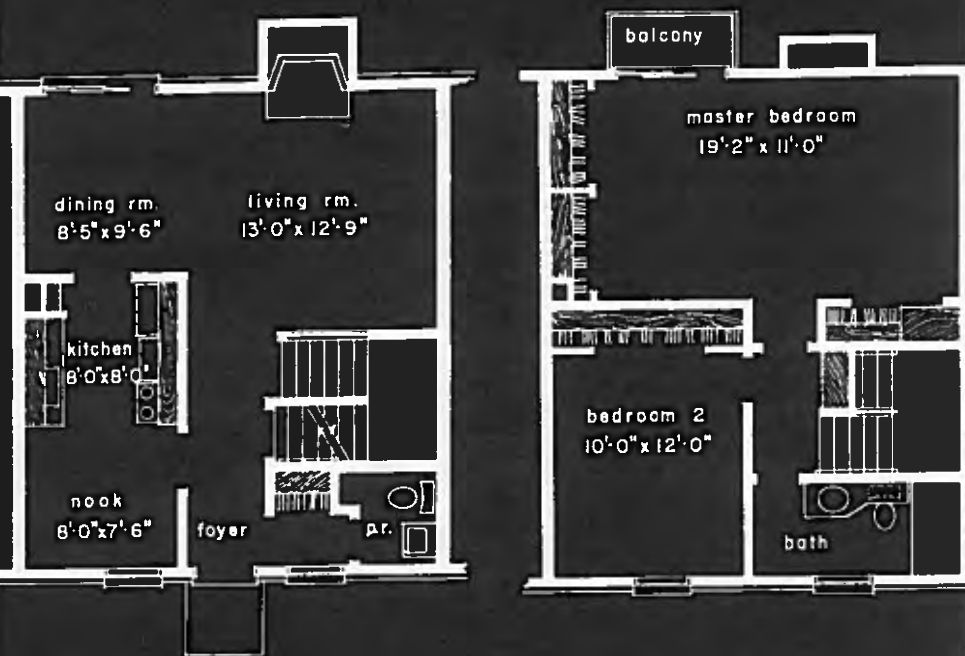


VILLA

Designed to accentuate the wide open spaces that modern families want, the Villa's living room with its welcoming fireplace and dining room are one sweeping expanse. Its master bedroom extends the width of the home under Smokler's exclusive "Visita-Vue" ceiling, and even has its own private balcony!

Features of the Villa

2 BEDROOMS, 1½ BATHS, FULLY AIR-CONDITIONED & CARPETED



FIRST FLOOR PLAN UNIT "K"
w/ alternate fireplace

SECOND FLOOR PLAN

- To be the world's best homemaker, start with the world's best kitchen — 14 cu. ft. double-door refrigerator-freezer, optional GE dishwasher, deluxe automatic oven and range with copper backsplash, and stainless steel sink with single-handed faucet and disposal. You'll also have mar-resistant Formica-topped counters and snack bars with counter plugs, supermarket pantry, utility closet, and loads of cupboard space with adjustable custom cabinets.
- Inviting guests is no problem in the Villa, because your living room and dining room are wide and deep. Here's a great place to become the most admired hostess in your circle. Both rooms overlook your private backyard.
- The Villa's breakfast nook is an ideal place for a late supper or a comfortable coffee hour as well as a delicious breakfast. Know Why? Because it's big, Big, BIG.
- You've never seen a master bedroom like the Villa's — as wide as your home itself, with private dressing vanity, romantic "Vista-Vue" ceiling, high double closets extending along an entire wall, and a private balcony for breathing the clean, fresh air. Romantic? Mmmm-hmm!
- Even bathroom facilities get a special attention in the Villa. The main bath is as luxurious as the optional gold accessories, beautiful ceramic tile, and a decorator-designed oval bowl can make it — while the downstairs bath is conveniently tucked away from the rooms you entertain in.
- You don't need "carpet money" . . . your Villa is already carpeted. And, you'll have central air-conditioning, gas forced-air heat, and sound-conditioned walls, too. They're all included with the price!
- Full private basement? Of course. It's pre-plugged for your washer, and contains a big 40-gallon hot water tank as well as space for all kinds of storage.
- Your own front and rear entrances insure your privacy and your convenience.

Prices and specifications subject to change without notice. Patio landscaping, decorator wall coverings and floor coverings, decorator paint colors, mirrors, plant-ons, furnishings, draperies, and other personal property are used for display purposes and are not included.

WINTHROP

Outside, the Winthrop is the picture of elegant simplicity. Inside, it's a model of comfort. With a large living room, formal dining room, and master bedroom extending the full width of the home, the Winthrop is designed for families of impeccable taste. Modest in price, it's far from modest in the amount of luxury it offers.

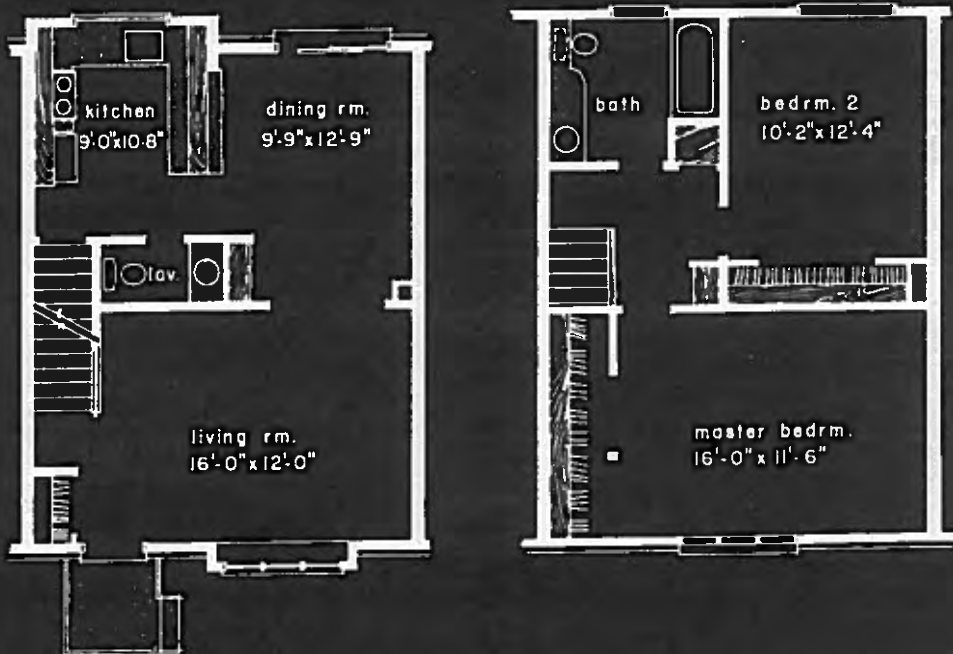


Features of the Winthrop

- Space is the keynote of the Winthrop. The living room is long and wide, with a bay window that emphasizes the roominess. The dining room, which overlooks the rear lawn through a sliding glass doorwall, offers sweeping view in both directions and gives you a sense of size and luxury.
- In the Winthrop's compact, efficiently-designed kitchen, the latest modern conveniences await you — deluxe automatic oven and range, optional GE dishwasher, 14 cu. ft. double-door refrigerator/freezer, stainless steel sink with single-handed faucet and disposal, mar-resistant Formica-topped counters with counter plugs, snack bar, and adjustable custom cabinets that give you lots of cupboard and food storage space. Big "supermarket" pantry, too.
- Upstairs, the Winthrop has only two bedrooms in an area where most homes have three. So Winthrop bedrooms are mighty large, indeed. The master bedroom with its huge walk-in closet extends across the entire width of the home, while the second bedroom (which overlooks the rear lawn) gives you a feeling of wide open space.
- Both the upstairs bath and the downstairs powder room luxuriate with beauty. Each has oval bowl, new suede Formica vanity, and lovely ceramic tile. Easy to keep clean, too.
- In the Winthrop we've paid great attention to details that make life more comfortable. The upstairs hall, for instance, has a special linen cabinet with linen-folding counter, plus a utility closet for brooms, mops, cleaning supplies, etc.
- In the Winthrop, carpeting, sound-conditioned walls, central air-conditioning, and gas forced-air heat are all included with the purchase price.
- Even the basement is something special here — with loads of storage space, big 40-gallon hot water heater, copper plumbing, and gas furnace. Pre-plugged for your washer, too.

Quality Features — other side

2 BEDROOMS, 1½ BATHS, FULLY AIR-CONDITIONED & CARPETED



FIRST FLOOR PLAN

UNIT "A"

SECOND FLOOR PLAN

Prices and specifications subject to change without notice. Patio landscaping, decorator wall coverings and floor coverings, decorator paint colors, mirrors, plant-ons, furnishings, draperies, and other personal property are used for display purposes and are not included.